



**CYPRESS**

**CREEK**

**PROJECT**



# Cypress Week

## Mary Waters

Saturday, July 27 – Sunday, August 2, 2008



# Cypress Week

- Hays County Commissioner's Court declared July 27- August 2, 2008 officially as Cypress Week.
- The purpose of Cypress Week was to:
  - Inform the public about our project
  - Check our assumptions of public perception of Creek health through survey collection and two public input meetings
  - Gather base-line information to help steer the project towards citizen concerns
  - Build community support of the project

# Cypress Week

You will see us in the community at the following times and locations:

Sunday 7/27 - Brookshire Brothers 2-7pm

Monday 7/28 - City of Wimberley chambers 6:30 - 8pm

Tuesday 7/29 - Texas Stream Team water quality monitoring training for Wimberley Residents at Aquarena in San Marcos 8am-4pm

Wed 7/30 - Canvas businesses with surveys and brief interviews 11-2pm

Thurs 7/31 - Linda's Fine Foods 11:30 - 1:30

Friday 8/1 - Maui Wowi Coffee Shop 7:30-10am

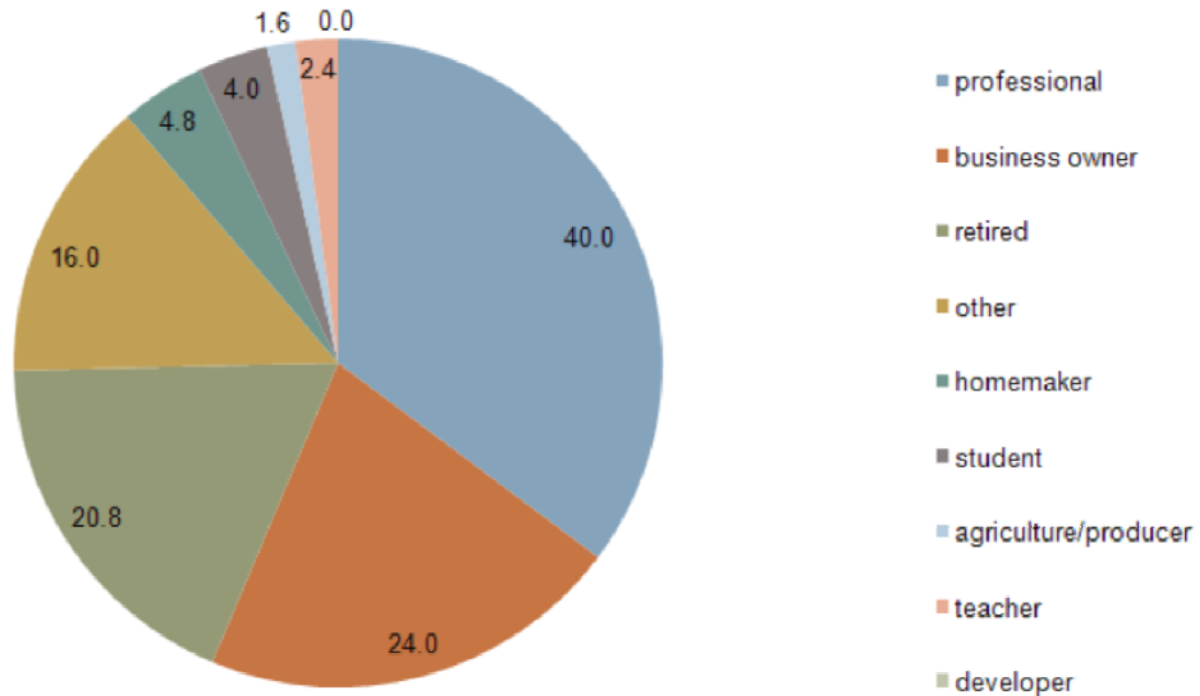
Saturday 8/2 - WVWA/Jacobs Well 10:30 - 12:00

Saturday 8/2 - Jacob's Well/WVWA headquarters 10-12 pm

- Spoke to about 250 people in the watershed
- Collected 128 surveys
- Two public forums:
  - The City Chambers
  - Jacob's Well
- Held water quality monitoring training session specifically for residents of the Cypress Creek Watershed

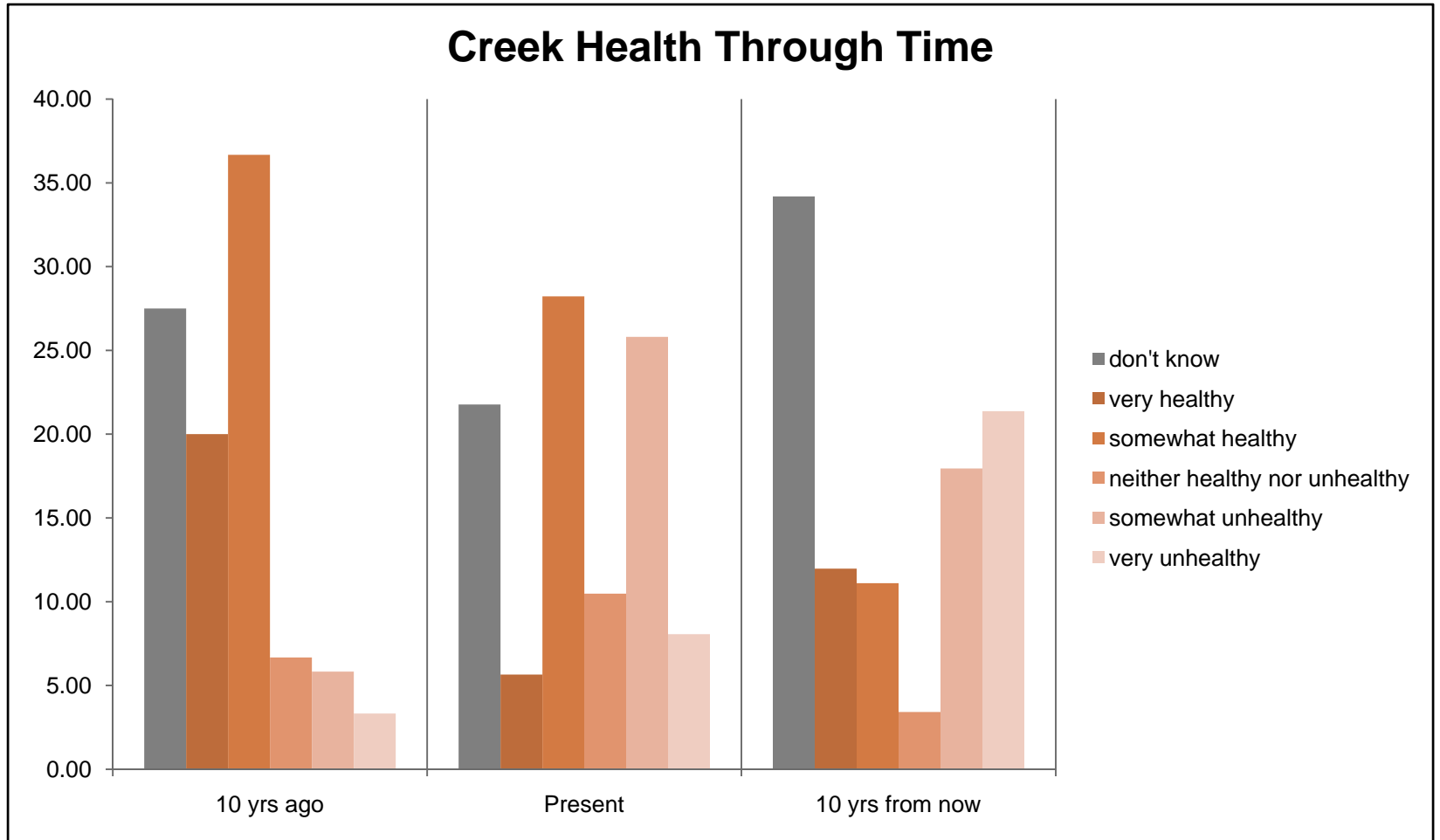
# Survey Results

Those Surveyed Labeled Themselves As:



62 % of those surveyed had resided in the creek an average of 10 years

# Survey Results

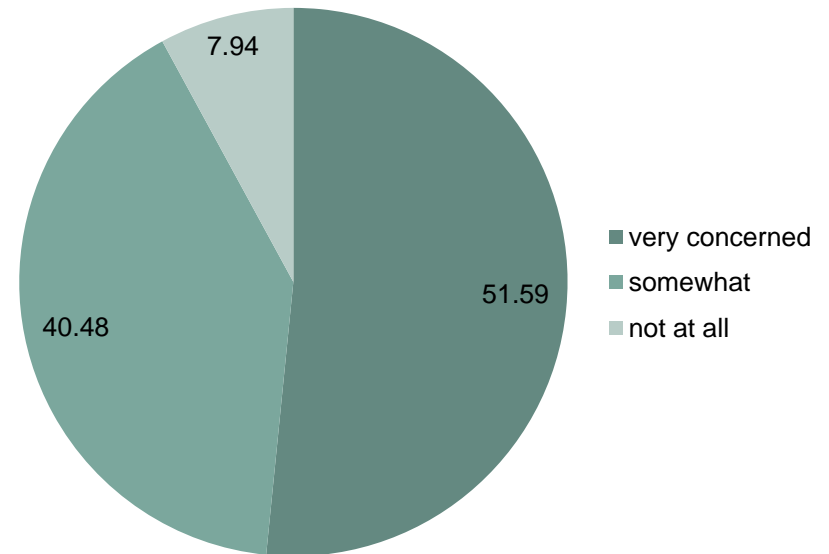


# Survey Results

## Most Important Environmental Issues in the Watershed were Ranked as:

1. water quality
2. population growth
3. maintaining creek flows
4. septic tanks
5. littering
6. unspecified pollution
7. other (specify) loss of green space  
flooding air quality endangered  
species there are no problems
8. don't know

## Concern About Water Quality in the Watershed



# Survey Results

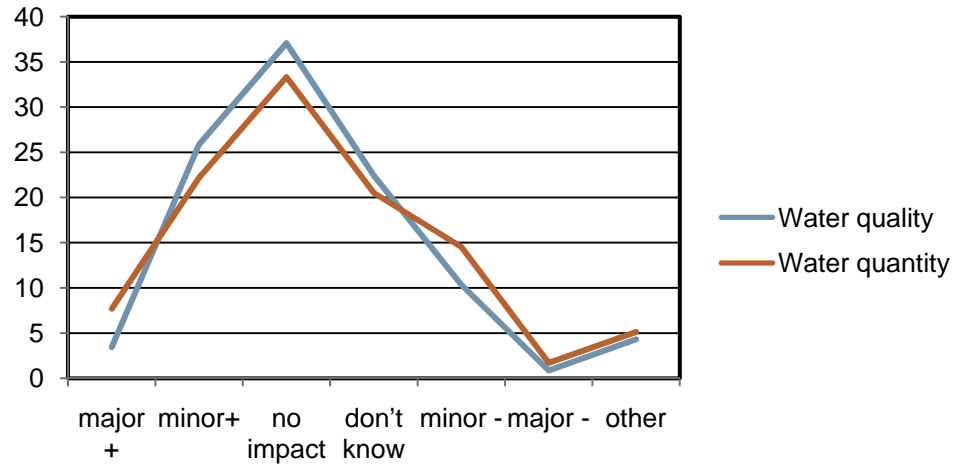
Reasons for Concern for Water Quality in the Watershed (Open Ended)	Number of Repeats
Population growth & development	27
Water quantity; sufficient flow	13
Quality of life/ aesthetics	13
Environment/"green"/eco-integrity	12
Litter/ NPS pollution	12
Human health	10
Future	8
Septic systems/ sewage issues	7
Recreation	6
Water availability (for human use)	6
Bacteria	3
Wildlife	3
Drought	2
Property values	2
Education & outreach	2
Don't know	1
Shouldn't be concerned	1

# Survey Results

## Who has the largest impact on water quality and quantity in the Watershed?

1. Developments
2. Homeowners or individuals
3. Other (specify)
  - All
  - cedar trees
  - could be others I am not aware of
  - local politicians
  - Restaurant
  - transportation vehicles
  - visitors camping
  - Woodcreek and Wimberley governing bodies
4. Septic systems
5. Golf courses
6. Don't know
7. Industry or companies
8. Farm/agricultural activity
9. None

## What impact do you have on water quality and quantity?



# Survey Results

## Who should be responsible for improving Watershed health?

1. Residents
2. Hays County
3. Municipalities
4. State agencies
5. Interest groups
6. No one
7. Don't know
8. Other (specify)
  - all/ everyone (x13 respondents)
  - business/ developers (x2 respondents)
  - private water corporation
  - education in schools
  - managed public access to creek
  - nearby residents
  - there is nothing wrong w/its health

## People thought the top five areas most vulnerable to degradation are:

1. Groundwater recharge features
2. Areas along the creek (riparian)
3. Habitat
4. Creek channel
5. And recreation areas

# Survey Results

- **Water Quality:**
  - Clean, clear, odor free, "fresh," healthy, free of pollutants, trash, bacteria count, habitat, eco-integrity, suitable, safe for recreation, flowing, regulatory compliance, water quality parameters within "normal" range, abundant (enough for everyone), ground filtration/spring-fed, and some don't know.
- **Water Quantity:**
  - Having sufficient or constant flow but not too much. It should be abundant and enough to meet demands. Creek should flow at "normal" (i.e. historical) levels via sufficient rainfall. Clear, clean water, with no trash, pollution, or bacteria is good. Some defined it as maintaining sound ecosystem. The definition was sometimes based on water use awareness/ conservation, "full" aquifer, no restrictions on use, low consumption/recharge ratio, sufficient for recreation fewer people, education & outreach, already below this level, and some don't know.

# Strong Community Support

- 2007 - Hays County voters passed a \$30 million bond
- Interviews
- Cypress Week Forum Response

# Thank you!

River Systems Institute  
601 University Drive  
San Marcos, TX 78666  
[www.rivers.txstate.edu](http://www.rivers.txstate.edu)



**RIVER SYSTEMS  
INSTITUTE**  
*Texas State University*

Cypress Creek Project  
[www.cypresscreekproject.org](http://www.cypresscreekproject.org)

